

BARTONIAN

LOCAL NEWS AND VIEWS

FROM BARTON TOWN COUNCIL

ISSUE NUMBER 70

Please support your local shops and businesses

NOVEMBER 2016



It's approaching that time again and this year's Festival and light switch on will take place on Saturday 26th November. There will be stalls on George Street and High Street; children's rides in King Street, and a performance stage on the High Street showing various acts from 12 noon to 7.00pm, as well as indoor crafts in the Joseph Wright Hall (ex Citadel), Victorian Market High Street, crafts at the White Swan



The Community Parade leaves The Ropewalk at 3.00pm led as usual by the team of 6 reindeer pulling Father Christmas on his sleigh. The Lantern Parade will also leave The

Ropewalk at 5.00pm and terminate near the stage. This will be followed by the Carol Service at the Christmas Tree on High Street, led by the Salvation Army with the Christmas lights switched on at 6.00pm by the Mayor Councillor Alan Todd and the winners of a local school competition, hopefully assisted by Viking FM. I hope you will be pleased with the event and if you aren't, come and tell me because the event is put on for your entertainment.

Please note, to facilitate the event, the following roads will be closed to traffic from 8.00am until 10.00pm: George, King and High Streets from Burgate to Fleetgate .

All that remains is for me to thank Councillor John Oxley, the members of the Community Working Party, Orkidz for kindly allowing the Christmas tree to be sited on its premises, the Town Clerk and Deputy Clerk for all their hard work and of course yourselves for attending.

Have a Merry Christmas and a Happy and Prosperous New Year.



FULL DETAILS OF BARTON CHRISTMAS FESTIVAL ON PAGES 15—18

**BARTON TOWN AWARD
2017—NOMINATION FORM
AVAILABLE FROM THE
TOWN COUNCIL OFFICE
FROM DECEMBER**

**BARTON BEST GARDENS
& HANGING BASKET
COMPETITION RESULTS
ON PAGE 25**

USEFUL NORTH LINCOLNSHIRE COUNCIL**WASTE INFORMATION**

Collection of bulky items:	01724 297000
Flytipping:	01724 297000
Household waste disposal/ recycling centres:	01724 297000
Litter:	01724 297000
Pest Control :	01724 297626/7
Waste commercial/trade:	01724 297806

Barton refuse site on Gravel Pit Lane

Summer opening hours: 10.00am to 6.00pm
(1 March to 31 October)

Winter opening hours: 10.00am to 4.00pm
(1 November to 28/29 February)

Closed all day Wednesday and Thursday

Asbestos disposal at Cottage Beck Road,

Scunthorpe **only**

1 March to 31 October 10am - 4pm,

1 November to 28/29 Feb 10am - 2pm



COOKE WEBSTER & CO
ACCOUNTANTS

*...friendly advice
for serious business...*

**For a full range of Accounting,
Business & Personal Taxation,
Payroll, Business Advice
& Support services**

26 Priestgate, Barton-upon-Humber,
North Lincolnshire DN18 5ET
Telephone: 01652 660630
Email: info@cookewebster.co.uk

Barton Evangelical Church

**You'll find us just off the Market Place,
in the heart of Barton on Humber**

**Sunday Worship: 10.30am
6.00pm**

"a friendly church for all the family"



**For more information visit our website at
www.bartonec.org.uk**

**In case of need the contact details of Barton Churches
Together are:-**

Anglican St Mary's Burgate DN18 5EZ Tel 01652 632202
Web www.stmarysbarton.org.uk

Methodist Trinity Chapel Lane DN18 5PJ Tel 01652 632148
Web www.bartoncircuit.btinternet.co.uk

New Life Church Tel 01724 280340
Web www.newlifechurch.co.uk

Roman St Augustine's Whitecross St DN18 5DF Tel 01652 652221
Catholic Web www.nottingham-diocese.org.uk

The Salvation Army Queen St. DN18 5QP Tel 01652 632666
Web www.bartonsalvationarmy.co.uk



BARTON WOODCARVERS GROUP



Whether a beginner or experienced, come and join our friendly and informal group which meets Thursday mornings in the school room, Trinity Methodist Church, Holydyke, Barton.



Just drop in for a chat on a Thursday morning 8.30am to 10.30am, or for further information contact: Mike Nutbrown
Tel: 01652 632783

Come and Join us

MD SIGNS

the sign and design specialists

www.md-signs.co.uk

01652 634265

- Shop Fascias • Post Mounted Signs • Projecting Signs • Safety Signs
- Banners • Pop-up Banners • X-Banners • Window Graphics
- Pavement Signs • Posters • Vehicle Graphics • Cut Vinyl Text
- Exhibition Stands • Stickers • Business Stationery and much more...



Find us on
Facebook

FOR ALL YOUR SIGN & DESIGN NEEDS

under new management



Barton Town Club

Is Now Under New Management



Catering is now available



Along with competitive room prices



For further details contact Sophia on:

07702553578 or email

sophia@bartontownoldboys.co.uk

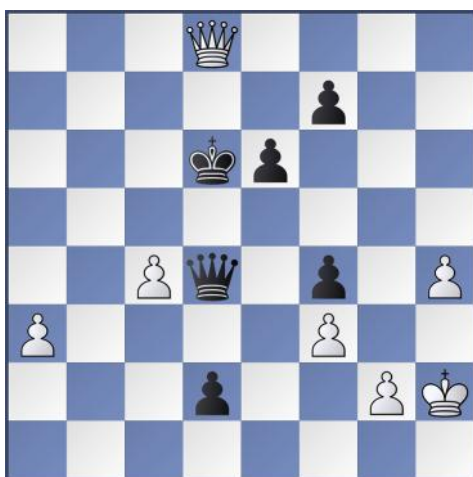


Barton Upon Humber Chess Club News

The Scunthorpe and District team Olympiad this year was held at Scunthorpe on the 17th October. Barton will be hosts for the district's Lightning competition which will be held on Monday 21st November at the Corn Exchange Barton at 7.30pm.

At our annual general meeting it was decided that we would not enter a team in the Lincolnshire league but concentrate on the Scunthorpe and District League. This was a decision taken with great reluctance but we felt we had insufficient players to field a team in two leagues.

Even great players make mistakes, Victor Korchnoi, who sadly died in June this year was one of the strongest players never to have been world Champion. He was playing with the black pieces in this game at Biel in 1986. Black to move played Kc5?? This was a major mistake can you see why? Barton Chess Club



meets at the Corn Exchange club Barton upon Humber on Monday evenings at 7.30pm from September till May. Players of all abilities welcome, our membership secretary is Mick Robinson tel. Barton 635945

Kevin Gravill Electrician

All Electrical work carried out

Barton upon Humber

01652 633411

07864 852586

www.kg-electrical.uk kevin@kg-electrical.uk

Call for free quote

Sockets, Lights, Consumer units, Repairs & More



Local Tradesman
Reliable
Polite
Professional
Fully Insured
Clean & Tidy
NICEIC Domestic
Installer

SHOP LOCAL CAMPAIGN

BARTON CARPETS & VINYL

10% DISCOUNT

Excl. Extras & Fitting

LATE NIGHT - Thursday till 7pm

SHOWROOM: UNIT 2, FALKLANDS WAY

SHOP: 01652 661041 MOBILE: 07970 544579

PLEASE BRING THIS VOUCHER WITH YOU TO QUALIFY

The Ropewalk

Barton's Cultural Quarter of a Mile

Christmas

CRAFT



The Ropewalk Craft Gallery has an ever changing display of the very best in contemporary craft. The gallery offers a wide range from ceramics and jewellery to glassware, textiles and unframed artwork – the perfect place to come to this Christmas for that exclusive or unusual gift for someone special or just for you.

Sculpture Garden | Exhibition Galleries | Picture Framing | Ropewalk Museum
Coffee Shop | Function Catering | Artists' Studios | Workshops | Meeting Room Hire
Creative Industry Workspaces | Ropery Hall - Live Entertainment Venue

**Free Entry - Open 7 Days a Week
10am - 4pm**

The Ropewalk, Maltkiln Road, Barton upon Humber,
North Lincolnshire. DN18 5JT. 01652 660380
www.the-ropewalk.co.uk www.roperyhall.co.uk



Local, Reliable IT Support
for Home and Business



m. 07756 123 417 t. (01652) 635667

<http://rtscomputers.uk> admin@rtscomputers.uk

The Hall, Chapel Lane, Barton, North Lincs, DN18 5PJ

BECK HILL MOTORS LTD

St Mary's Works Soutergate Barton-on-Humber DN18 5HG

www.beckhillmotors.co.uk

01652 632400



All makes of cars and
light commercials welcome!



- ♦ M.O.T. S CLASS 4 & 7
Inc Motorhomes
- ♦ Servicing & Repairs
- ♦ Diagnostics
- ♦ Air Conditioning
- ♦ Exhausts - Tyres - Batteries
- ♦ 4 Wheel Alignment
- ♦ Car Wash & Valeting





BARTON UPON HUMBER LIONS CLUB

Serving the community since 1970

Happy Christmas from Barton Lions Club

What and who are Barton Lions?

A question asked! You will have seen us serving hot food, marshalling at events in the area, at our Annual Beer Festival, of course at our annual Bonfire and Fireworks night and helping Santa around the town on his sleigh at Christmas. But what and who are we, and what are we all about? Barton upon Humber Lions Club was formed in 1970 and currently has 25 members serving you. We have bags of fun in our club and enjoy serving you at the many events we organise and attend.

But it doesn't stop there! Lions are Global - we are members of the world's most active and largest service club organisation, that was formed by a few businessmen in 1917, in Chicago, USA.

Next year marks 100 years of Lions Clubs International!

We believe that by working together we will accomplish far more than would be possible as individuals. We are serious about our commitment to humanitarian service, but have loads of fun along the way. We are proud that our organisation is close to a century old and that it has a distinguished history of doing good for the world.

Local communities respect and trust their clubs, both because those clubs are made up of neighbours and friends who have a long record of support, and because of the Lions Clubs International name and legacy. When we meet fellow Lions for the first time, we treat them like old friends. And when you join Lions, you join a global service network. So at the same time you're helping your own community locally, you can also contribute to Lions community efforts in other countries.

We raise money at the events we organise and attend and donate these back to many supported causes mostly local clubs, groups and individuals totalling around £13,000 annually. We cover all costs from our own dues, ensuring that all donated funds go to the causes. So over the years the sum raised and given back to our community sure is a staggering figure!

Thank you all for your support.

Recent donations made to:

£3,600 split between all local schools
Barton Living Memorial Trust
Alzheimer's Society (cycle ride)
Barton Town Old Boys FC
Burton Heritage Group

Coming up:

Santa's Sleigh (Weds 14th Dec to Tues 20th Dec)
2017 Beer Festival!
Cycle rides, banger rallies and many more!

for sleigh routes visit

facebook

facebook.com/barton.lions

Email info@bartonlions.co.uk
Contact Lion John 01652 781588



email info@bartonlions.co.uk

Ordinary People doing Amazing Things

www.bartonlions.co.uk

Deterring would-be criminals is one of the most effective forms of crime prevention. Invest in a motion sensor flood-light or even some outdoor Christmas lights to highlight your home's exterior. This will hopefully make approaching your home too conspicuous for a burglar. Highlighting the fact your possessions are security marked and registered on Immobilise using window decals provides a further warning that your goods are marked, traceable and not worth the risk of stealing!

Festive lighting - be secure. A common mistake of many festive decorators is to feed extension cables through partially open windows, criminals know to look for this vulnerability. When it comes to outdoor lighting, opt for solar or battery operated lights or install outdoor electrical outlets.

Dispose of gift packaging carefully. Refuse collections over the Christmas / New Year period are normally at different times. If you can't take packaging to a recycling point, make sure you only put your rubbish out just before the collection and do your best to fold boxes so that they do not advertise your new contents of your home to thieves!

Protect your Identity. It is good practice never to dispose of receipts and personal paperwork without first shredding it. Christmas is a time when this is especially important! Be careful though not to shred any important warranty details, make sure documents you keep are stored somewhere secure.

Check doors and windows for weak spots. Installing a few dead-bolts and new window hinges could increase the security of your home exponentially.

Keep your curtains, drapes and window blinds closed at night, making sure valuable items are out of sight. When going out for the evening make use of inexpensive timers to give the

illusion of occupancy.

Away over Christmas - plan ahead.

If you're going away at Christmas be sure to cancel any newspaper or milk subscriptions. Arrange for a neighbour to park on the driveway to help create the impression someone is home. Do not leave descriptive telephone answering machine messages like, "we're away skiing for the Christmas holidays," etc and again make use of light timers.

Secure garages & sheds. Make sure that garden tools or ladders that could be used to force entry into your home are not left lying around or accessible from an unlocked garden shed. Garages are often targets for burglars looking for tools, bikes and gardening equipment - make sure the garage is secure and your possessions are secured too in the case of bikes and tools. Naturally make sure anything portable / valuable is recorded on Immobilise.

Don't hide keys & use alarms if you have them. Burglars know to look for hidden door keys so don't hide spare keys under rocks, in flowerpots, or above door ledges. Instead give the spare key to family or trusted neighbour. Many houses these days have alarms, many though are rarely set, make sure yours is on and protecting your home.

Register on Immobilise. Lastly, don't forget to register your gifts on Immobilise - Its FREE - Most electronics have a unique identifier such as a serial number or an IMEI number (International Mobile Equipment Identity) which can found easily by pressing the following keys on your mobile handset: * # 0 6 # .



Baysgarth House Museum

Christmas Fair 2016
Saturday 3rd December

Baysgarth House Museum will be holding its traditional Christmas Fair this winter, with craft stalls, family activities, Santa's Grotto, refreshments and more! Open 10am – 3.30pm.

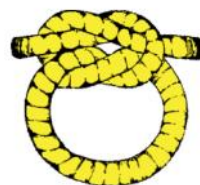
Exhibitions 2017

We're busy planning all our exhibitions for 2017! Follow us on Facebook or Twitter or look on our website to find out more about upcoming displays on Archaeology, local historian Rex Russell and life in Baysgarth House while the young Wright-Taylor family was growing up during the Victorian and Edwardian periods. What will you discover?

Winter Opening Hours

From November, Baysgarth House Museum is only open on Saturdays and Sundays, 12-4pm. Four day opening will resume on the 2nd March 2017!

For more information, please contact Baysgarth House Museum on 01652 637568 or email info@champltd.org. You can find us at: Baysgarth Park, Caistor Road, Barton on Humber, North Lincolnshire, DN18 6AH. For more information see our website at www.champltd.org or follow us on Twitter @BaysgarthHouse for more news!



CHAMP

Community Heritage Arts
& Media Project

Registered Charity No: 1114978

Company No: 05818938



Barton Town
Council





www.MSM-REFINISHERS.co.uk

*setting the standards
in professional perfection*



★★★★★
5 STAR BODYSHOP



Accident Insurance Repairs • Paintwork

Machine Polishing • Customising & Colour Coding

Alloy Wheels Refurbishment • SMART Repairs

FREE QUOTES CALL US TODAY!

T E L E P H O N E

01724 733300

50 PARK STREET WINTERTON



Barton Rotary Club



Invites Senior Citizens from Barton and the surrounding villages to our free

Annual Christmas Concert

Featuring The Positive Notes Choir plus festive organ music "Sing-along"

Held at Trinity Methodist Church on Sunday 18th December 2016 at 4.00pm

Includes Refreshments, served at 5.00pm and Raffle

For transport assistance, please contact David Witter on 01652 632675

Senior Citizens - On your own over Christmas?

Difficulty in preparing your Christmas Dinner?

Then don't hesitate to contact us and we will deliver one to your home on Christmas Day, turkey and all the trimmings.

Contact David Witter on 632675 with your name and address by Friday 9th December so that one of our members can contact you to make the delivery arrangements

The Barton Living Memorial Trust



September for the Trust had its highs and lows, the lows being the passing away of 2 of our members, Mrs Marjorie Ball who along with husband Don were a great help when we put on functions and George Bernard Clipson who spent most of his working life in and around the town. His photographic memory of old Barton faces is a service we shall all miss.

Well the highs, all the trees planted in Baysgarth Park in the spring have grown and during October bulbs will be planted in the Copse. These being kindly donated by North Lincolnshire Council and Barton Town Council.

The Trust is also placing a memorial seat on Barrow Road opposite the Cenotaph which we have been able to purchase with generous donations from Barton Lions Club, Barton Rotary Club and Associated Pipeline Terminals of Immingham. We are now waiting for our grant application to purchase the Tin Tommy sculpture from North Lincolnshire Council, both these purchases are to commemorate the 100 year anniversary of the Battle of the Somme where again Barton soldiers gave their lives.



Chris Dunderdale JOINERY SERVICES

Internal & External Doors
Kitchens Fitted & Supplied
Bedrooms & Staircases
First & Second Fix Joinery
Roofing & Loft Conversions
Laminate Floors, Decking Areas
Bespoke Joinery
General Joinery Repairs

FREE ESTIMATES
OVER 25 YEARS EXPERIENCE
NO JOB TOO SMALL

28 Haven Road, Barton-on-Humber
North Lincolnshire DN18 5BS

Telephone: 01652 635034
Mobile: 07774 407521 
Email: cmdunderdale@msn.com

Need an Accountant? Rebecca Beaton Accountancy Services



I can provide the following services:

Bookkeeping • Payroll • VAT
Tax Returns • Sole Trader Accounts
Small Company Accounts • Partnership Accounts



Please get in touch for a FREE consultation:

Rebecca.beaton@yahoo.co.uk Telephone: 01469 532999

Mob: 07525 202528 www.facebook.com/rebeccabeatonaccountancyservices

S T LEANING

GAS FITTING,
PLUMBING & HEATING

GAS SAFE
(CORGI REG.)
NO. 20160



NEW INSTALLATIONS/
REPAIRS/SERVICE/
POWERFLUSH SYSTEMS

CONDENSING BOILERS BY
FERROLI

OVER 1500 FITTED
5 YEAR GUARANTEE

TEL: 01652 635619
MOBILE: 07767 690 136

See what's on your doorstep **BUY IN BARTON**



**LIVE TOTALLY
SHOP LOCALLY
SAY SOMETHING GOOD**

*invest in your town
walk in that door you always pass*

SLOW DOWN

*BE A TOURIST IN YOUR OWN TOWN
find the value in the cost*

**EAT FOOD GROWN WITHIN
WALKING DISTANCE**

get to know your baker

DISCUSS THE WEATHER

SEE WHAT'S ON YOUR DOORSTEP

DISCOVER YOUR COMMUNITY

ask an expert

*FIND OUT WHO CAN DO IT IN
THE PLACE THAT YOU LIVE*

*Learn the name of
the person at the till*

smell the fruit before you buy

*find your favourite
place and tell*

Someone else about it

**SHOW YOUR KIDS THEIR FUTURE
LOOK UP & ADMIRE THE VIEW**

ASK YOUR BUTCHER HOW TO COOK YOUR DINNER

make conversation with a stranger

FIND OUT WHAT'S MADE IN YOUR AREA

love where you live

invest in your future



BARTON CHAMBER OF
TRADE & INDUSTRY

Helping to Build a Better Barton

Wilderspin National School Museum

We now have exploration satchels for young children to unpack and help them explore, (thanks to funding support from the Humber Museums Partnership), our popular Teddy Trail, and most things can be touched by inquisitive hands. The cafe has lots of healthy snacks for kids too.

During the year we had our 60,000th visitor since opening in 2009 – and over 110,000 people have visited or used the museum for meetings, courses or private hire. Visitors from the French town of Saffre, twinned with Winterton, visited during the summer as part of their town twinning trip to England.



Christmas at Wilderspin (Saturday 26 November, 1pm – 5pm)

Indoor Christmas market, table top sale and Victorian Father Christmas in the museum's grotto.

A Christmas Carol (Monday 5 – Wednesday 7 December in the Joseph Wright Hall)

Friends at Barton present this classic Dickens tale of the mean old miser Scrooge. Tickets: £5. t.(01652) 635172.

Ted Lewis Exhibition (6th January - 4th February)

Winter opening times are 11am – 3pm from 27 November. The museum and café close on Friday 23 December for Christmas. The Old School Canteen will be open between Thursday 29 -Saturday 31 December. The Museum re-opens on Thursday 5 January 2017.



(1940-1982)

Author, graphic artist and musician.

An Exhibition of the
Art, Life and Times of Barton's

Ted Lewis

Photo Courtesy of
David Lee Photography

Wilderspin National School, Queen Street, Barton, DN18 5NS,

Thursdays to Sundays 10 am to 4pm

5th January to 4th February 2017

Ted Lewis studied at Barton Grammar school under Head of English, poet and novelist, Henry Treece. After studying at Hull College of Art and Design where he played piano in the Unity Jazz Band, Ted went on to make a career in graphics. His last work was on The Beatles' *Yellow Submarine*. He wrote 9 novels, the most well-known becoming the film *Get Carter* starring Michael Caine.

The Ted Lewis Group brings to Barton its successful 6 weeks Exhibition at North Lincs Museum telling the full story about how this young boy, full of enthusiasm for film and drawing, began a revival of the British gritty 'noir' genre to the page and screen.

This collection of more than 14 entertaining storyboards together with posters, photographs, first edition books, *Get Carter* film script, Ted Lewis diary, writings and sketches plot the novelist's rise from a sickly but lovable young boy through jazz and graphics to success in many areas of life before a tragic early death.

Later, The Ted Lewis Group will take The Ted Lewis Story to Hull City of Culture during May 2017 in a celebration of arguably Barton's most creative artist, an initiative with the co-operation of the Hull College where Ted studied.

Before or after the Barton Exhibition, relax and enjoy the home made local refreshments at The Old Canteen in Wilderspin National School.

The new Andy's Children's Hospice shop in Barton has been declared a success.

The charity took over the vacant premises in the Market Place earlier this year and opened for trading in June, but an official celebration was held later to mark the official ribbon-cutting.



Simon Vicary, head of retail, said: "Not only are we opening a new venture to provide vital funds, we are revitalising a prominent retail space."

"We will be offering high-quality used goods to customers in Barton and are looking forward to integrating into the local community."

Andy's – Lincolnshire's only children's hospice - worked closely with Scott's Property to secure the site, which said it was pleased to see a vacant property in the town centre occupied and trading once more. Simon continued: "Barton has been on our list of towns we wanted to have a presence in because not only is it important to reiterate what Andy's does in the area, but Barton has a growing population and lots of new home builds."

"It's somewhere we are excited about trading in. The closest existing shops to Barton we operate are in Hull and Immingham, so Barton fits very well into our established distribution network."

"The hospice plays an important role in northern Lincolnshire and our investment shows how committed we are in being at the heart of the community."

The volunteers and manager of the store, at 17A Market Place, have been delighted to welcome a steady stream of customers. It opens Monday to Saturday, 9am to 4.30pm. Donations of unwanted items are welcome.

If you'd like to volunteer in store, please call 01472 350908. Roles include sales assistants, sorters, steamers, merchandisers, till operators and also anyone with knowledge of books, CDs, DVDs and collectable bric-a-brac to help maximise funds.

Pictured centre is shop manager Janet Emery, with volunteers Kathryn Robinson and Emily Leaning, and the hospice's head of retail, Simon Vicary (right), and retail operations manager Emily Appleton (second left).

Jubilee A.C

Our 4th Annual Memorial Charity Match was held on our pool in Pasture Road on Sunday 10th July.

24 members fished a 6 hour match, following which a barbecue and raffle was held, in aid of this year's chosen Charity – Macmillan Nurses.

Monies raised from this event amounted to £1,320.

We would like to thank businesses in Barton and members of the public for their generous contributions which are too numerous to mention, and which greatly surpassed previous years totals.

Mr Brian Mason. (Match Secretary)

16 The Rushes,
Barton Broads Park,
Barton – on – Humber

Telephone No. 01652 635692.



(Presentation Party : Brian Mason, David Broddley, Yvonne Favell, Sue Gouldthorpe)

(Photography By: Miss Stevie Storey)

Barton Town Council

Suggestions/Comments Box—Have your say!

Please use the form below if you have an enquiry, complaint or any suggestions - let us know your thoughts. Please make sure you give us your contact details as we cannot deal with anonymous correspondence.

Name

Address

Telephone

Email

Enquiry/complaint/suggestion

.....

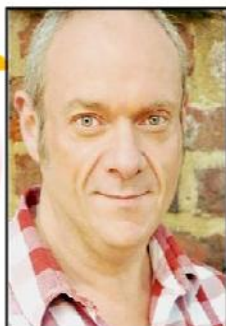
.....

* I consent / I do not consent to my details being passed to a third party.

* Please delete as appropriate

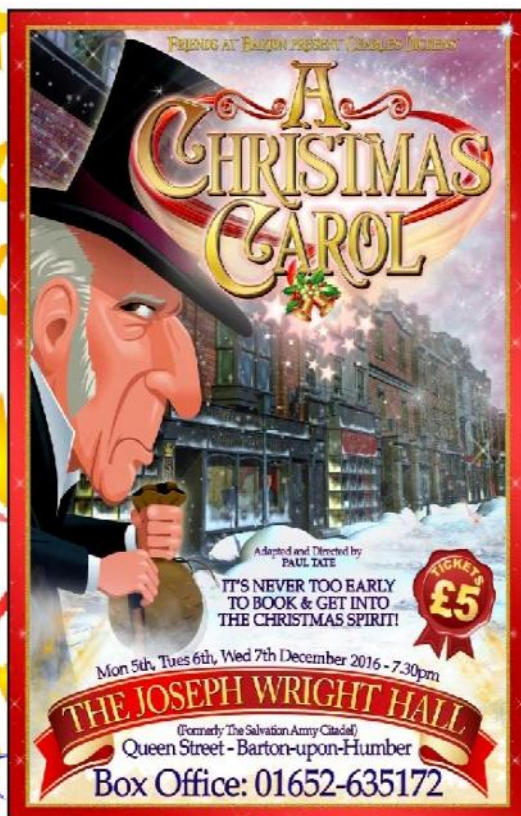


FRIENDS AT BARTON



Paul Tate is returning to his old home town to direct A Christmas Carol. He was born at Scunthorpe General, raised in Barton and some of his family, including his Mum still live here. He moved to London in 1986 to pursue a professional career as an actor. Some of you may remember him from the Baysgarth School shows in the 70s and 80s. He was also a founder member of Barton Operatics and appeared in their shows before he moved away.

About eleven years ago he was asked back to direct the BADAOS productions of Oliver and The Wizard of Oz. Both shows sold out before they even opened! He has missed it so much that he has decided to form a new community Drama Group for the area, Friends At Barton. FAB for short! Their first ever production will be one of the world's best loved stories, A Christmas Carol. He has adapted the book into a stage play, a traditional telling of the tale but with a few surprises!



FAB will be raising funds in aid of Lindsey Lodge, St. Andrew's Hospice, The Brain Tumour Organisation and Scunthorpe Samaritans. All connected in some way to members of the group. It will be performed in a new Theatre space for Barton, the Joseph Wright Hall, formerly the Salvation Army Citadel in Queen Street.

Ghosts, Songs, Laughs! All tickets £5!!!

It's never too early to book and get into the Christmas Spirit!!!

You can follow both the group and Paul on:
facebook.com/FriendsAtBarton
twitter.com/bartonfriends
facebook.com/paultateactor
twitter.com/IamTatey

Barton Town Council would like to thank

The Community Committee;
Barton Chamber of Trade;
Barton Local Policing Team;
The Ropewalk;
Barton Neighbourhood Services Team;
MD Signs;
North Lincolnshire Council;
Viking FM;
R & J Leisure;
A N Robinson landscape gardeners;
Plus anyone else not known when going to press....

**3.00pm – Community Parade led by
Reindeer leaves The Ropewalk**

**5.00pm Lantern Parade leaves
The Ropewalk**

Both Parades start from The Ropewalk car park area. The Community Parade will be judged at the start this year by representatives from the Barton Police Team, Chamber of Trade & Town Council. It will go along Fleetgate, High St & King St, ending at the bottom of George St. The Lantern Parade follows the same route stopping at the stage at the Junction of King St and High St. All of the lanterns have been made by children involved in the parade during a series of workshops at The Ropewalk.

5.30pm Salvation Army Band Carol Service, followed by Christmas tree lights switched on at **6.00pm** by the Town Mayor, Councillor Alan Todd, assisted by two local Primary School Festival Competition Winners.

Stage entertainment midday - 7pm

**DON'T FORGET, INDOOR CRAFT
FAYRE IN THE JOSEPH WRIGHT HALL
(ex CITADEL) ON QUEEN ST &
VICTORIAN MARKET OUTSIDE
COBBLERS AT 102 HIGH STREET**

Christmas Festival Late Night Shopping

Shops open at time of going to print:

- Sargent's Ice Cream
- Co-operative Food
- Harrison's Place
- Corn Exchange Club
- Evangelical Church
- Red Cross clothing shop
- Events Lingerie
- Sweet Shop
- Lindsey Lodge Hospice Shop
- Taz's Fish Bar
- Lindsey Relay
- The Money Box
- Coopland's Bakery
- Teasdale Bakers
- Milla Boutique
- Gingerbread Tearoom
- The Flower Garden
- Rosy & Tilly
- Helios Tanning Studio
- Professional Beauty Treatments
- Vape Shack
- Amy's Barbers
- The Raj
- Pizza Jim
- The Surma
- Barton Fish Bar
- Barton Shopping Centre
- Partner's Tea Room
- Water Margin
- Sally Anna's
- Cobblers Victorian Market
- Charlie's bar
- The Singing Kettle Cafe
- The White Swan crafts stalls

BARTON CHRISTMAS F

Events held on George Street,

Saturday

**Join Santa &
Reindeer in
the Community
Parade at
3.00pm**



**Christmas Lights
Switch on & Carol
Service at the
Stage on
High Street**



MD SIGNS
your sign and design specialists



FESTIVAL 2016

King Street & High Street, Barton

26th November

Midday-7pm

**Lantern Parade
with local children
at 5.00pm both
leaving from
The Ropewalk on
Maltkiln Road**



Attractions include

Street Entertainment •

Vikingfm Roadshow •

Outdoor Craft & •
Charity Stalls

Indoor Crafts at •
Wilderspin National
School
& The Joseph Wright Hall

Small Rides •

Late Night Shopping •



Midday
Live Entertainment
1.00pm
Duck Egg Theatre
2.00pm
Castledyke School Choir
3.00pm
Rushby Dance & Fitness
4.30pm
Showers Choir
5.30pm
Salvation Army Carol Service
6.00pm
Lights Switch On
6.15pm
Christmas Music

SNOWMAN HUNT

Can you find all the Snowmen in Barton ?



There is a Snowman located in 6 members' shop windows. Find the Snowman and write down the name of the 6 shops where a Snowman is to be found on the entry form below for your chance to win a money voucher to spend in any of the shops of Barton Chamber members.

1st prize £25.00 2nd £15.00 3rd £10.00

The competition will take place over the Christmas Festival period and is open to all children aged 11 years and under.

CLOSING DATE: Friday 2nd December 2016

The Snowmen will be found in one of these members' premises that trade within the vicinity of the Christmas Festival

Market Place	George St/King St	High Street	Fleetgate
Corn Exchange	Altham's Travel	Smith & Walker	Carlton Education
Best Wishes	Cooke & Webster	Barton Dental Surgery	Fleetgate Glass
His & Hairs	Lindsey Relay	Barton Veterinary Centre	The Ropewalk (Maltkiln Road)
Smailes Goldie	Fresh Cotton Clean	Barton Shopping Centre	Rushby Dance & Fitness Centre
Sargent's ice cream	DDM Residential		
	George Hotel		

- ◇ Please post your entries into the box provided in Euronics, George Street, Barton
- ◇ Winners will be drawn at random on Saturday 3rd December from the correct entries received. The judges' decision is final.
- ◇ All winners will be notified by telephone or in person as soon as possible



Name _____ Telephone Number _____

Address _____ Age _____

Place 1 _____ Place 2 _____

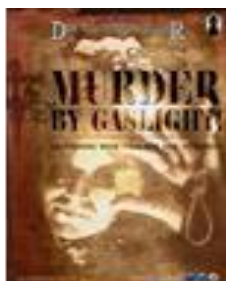
Place 3 _____ Place 4 _____

Place 5 _____ Place 6 _____

THE HISTORIC ASSEMBLY ROOMS

Queen Street, Barton, DN18 5QP

What's On?



Murder by Gaslight

11 Nov 2016 at 7.30pm

A 'Don't Go Into the Cellar' production

An audience with Palmer & Crippen. Guilty as charged?

Tickets £7



Dare Devil Rides to Jarama

25 Nov 2016 at 7.30pm

Centred on the lives of two British men who fought in the Spanish Civil War. This new play coincides with the 80th Anniversary of the International Brigade and the Battle of Jarama in 1937

Tickets £7

Live Lincs (Rural Touring Scheme)



The Canterville Ghost

20 Nov 2016 at 3.15pm

Be prepared for chills and chuckles with this original stage adaptation of Oscar Wilde's classic tale!

Tickets Adults £7
U16s £4



The SILVER CIRCLE

Band

3 Dec 2016

Ticket details tba

The Del-Vikings

17 Dec 2016 at 7.30pm

It's Christmas

SHAKE OFF THOSE BLUES
& DANCE!

Tickets £7

COMING SOON!

@assemblyroomsbarton

1 & 2 Dec 2016

Barton Musical Theatre Co (Juniors) Xmas Show

*Details & tickets
for these events
available soon!*

22 Jan 2017

Megaslam Wrestling - family friendly

Unless otherwise stated above:

Tickets available from Euronics (George St, Barton) and Baysgarth House Museum

Reservations and enquiries (01652) 637568 or email: info@champltd.org

Find out more at: www.champltd.org and facebook

AVAILABLE FOR HIRE

See back page of this issue



CHAMP, a local charity, manages four buildings in Barton:
Assembly Rooms, Baysgarth House Museum,
the Hub (previously the Youth Centre) and
51 Fleetgate (currently pending architectural conservation work)

Charity No. 1114978
Company No. 05818938

BARTON GHOST WALK

Dare you walk the streets of Barton after dark with only spirits to guide you? Join the South Bank Players as they explore the backstreets of Barton and tell you tales from the past to make your hair stand on end! Actors in period costume bring stories of bygone Barton to life and the past seems frighteningly real...

The first walk of the season is on Halloween and subsequent walks are on Wednesdays 30th Nov, 25th Jan, 22nd Feb and 22nd March. Meet at Baysgarth Museum at 7.15 for a 7.30pm start. Dress warmly, bring a friend, and a torch! The walk costs £4 for adults and £3 for children.

For further information or to book in advance contact Dennis on 01469 531003. If you plan to bring a large group please let us know!

In January we will be performing our annual pantomime which will be 'Puss in Boots'. If you would like to join us either on the stage or helping out behind the scenes then you will be made most welcome! Contact Alun Friend on 07500 474446 for further information. Our usual rehearsal time is 7.30-9pm on Sunday evenings at the Barrow Squash Club.

BARTON CORN



EXCHANGE



MARSTON'S BEERS
GUEST CASK ALES
SNOOKER - POOL - DARTS
DOMINOES - CHESS
BAR/LOUNGE WITH TV
FREE WI-FI
LICENCED FUNCTION ROOM
AVAILABLE FOR HIRE
NEW MEMBERS WELCOME

8 MARKET PLACE
BARTON UPON HUMBER
DN18 5DA
01652 632104



RNS

Independent Financial Advisers

Wondering about pensions and investments?

Book your **FREE** High Street consultation.



Contact Us:

Barton - 01652 655111

41 High Street, Barton-Upon-Humber,
North Lincolnshire, DN18 5PD

Offices also at:

Scunthorpe - 01724 842713

50 - 54 Oswald Road, Scunthorpe,
North Lincolnshire, DN15 7PQ

Brigg - 01652 655111

The Poplars, Bridge Street, Brigg,
North Lincolnshire, DN20 8NQ

www.rns-ifa.co.uk

Luxury Eyewear at O'Brien's, Brigg

✓ Do you want to see the same Optometrist and Staff every time?

✓ Do you want to be known as a name and not a number when you visit the Opticians?

✓ Do you want to see the most fashionable frames and finest optical quality lenses from around the world?

Open on Saturdays • Free Home Eye Tests Available
O'Brien's Opticians in BRIGG
Legendary Eyecare - Quality Eyewear
Purveyors of Luxury Eyewear since 1979

O'Brien's Opticians is open Monday to Saturdays. On street parking is available in the surrounding streets. FREE parking is available on weekdays (for the first 2 hours) and ALL DAY on Saturdays. The practice is proud of its FREE home eye examinations. This service involves all the usual staff of the practice. Patients will be able to choose from the same frames that are available in the practice.

The practice itself is situated in the Wrawby Street area at the heart of Brigg Town Centre. The aim is to create a warm and welcoming environment within the traditionally furnished surroundings. Emphasis is placed on personal service, correctly fitted frames and accurately dispensed lenses by a qualified manufacturer such as Carl Zeiss, Essilor, Sola, Nikon and Hoya. In a market dominated by larger optical

groups there is a practice dedicated to providing patients with a reassuring, individual and professional service. Established since 1979, O'Brien's boasts a state of the art examination suite with Optometric eye testing software - same as that used at the prestigious Moorfields Eye Hospital and Great Ormond Street Children's Hospital. Mr. Sheeran-Jarvis has been the lead Optometrist at the practice since 2005.

The largest range of quality and luxurious eyewear in Lincolnshire can be found at the practice. Designer ranges include sought after brands such as Armani, Bulgari, Tiffany, Ray-Ban, Polo, Prada, Paul Smith. O'Brien's is known for the widest selection of frame styles hand picked from around the world. Exclusive niche eyewear by Persol, Oliver Peoples, Aneel Valentino and New

York's finest Moscot. You will also find GAZAL Eyewear made famous by stars in the US. O'Brien's is now stocking frames by Silhouette which are the lightest available especially the famous rimless designs. Silhouette acetate frames are also worn by Her Majesty Queen Elizabeth II. Gold and jewelled frames can also be purchased.

The practice also offers a complete contact lens fitting and aftercare service. Spectacles and contact lenses have never been more affordable since the launch of our monthly Tyoplat.

O'Brien's welcomes the registration of new patients. The practice is open from Monday to Friday from 9am to 5pm, Saturday 9am-4pm. Telephone: 01522 653295 to make an appointment. enquiries@obriensopticians.co.uk Visit www.obriensopticians.co.uk



Above, The O'Brien's staff and below, Laura Jarvis performing an eye examination



LOOKING FOR
INDEPENDENT
SERVICE AND
DESIGNER
BRANDS?

**O'BRIEN'S
OPTICIAN**

ESTD. 1979

CELEBRATING
35
YEARS

FREE
HOME
EYE TEST

**FINEST
OPTICIANS IN
LINCOLNSHIRE**

Purveyors of Luxury Eyewear since 1979

Eye Examinations • Contact Lens Examinations
• State-of-The-Art Equipment



43/44 WRAWBY STREET, BRIGG, NORTH LINCOLNSHIRE

OPHTHALMIC OPTICIANS & CONTACT LENS SPECIALIST

PRACTICE MANAGER - JANE PALMER, OPTOMETRIST - SHEERAZ A. JANJUA BSc (Hons) MCOptom
 OPENING HOURS - MONDAY TO FRIDAY 9.00 - 5.00, SATURDAY 9.00 - 4.00 • NEW PATIENTS WELCOME •
 WEB: www.obriensopticians.com EMAIL: enquiries@obriensopticians.co.uk TEL: 01652 653 595

Coming soon to The Baths Hall and The Plowright Theatre, Scunthorpe



Royal Philharmonic Orchestra
30 November
The Baths Hall



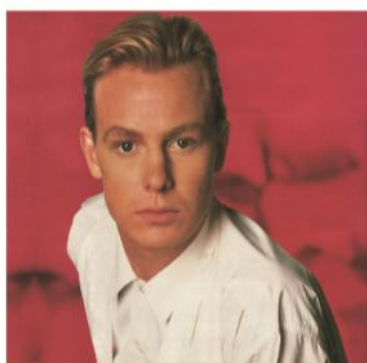
Cinderella: Christmas Panto
3 December – 3 January
The Plowright Theatre



Frank Turner & The Sleeping Souls
5 December
The Baths Hall



That'll Be The Day:
The Christmas Show 7 December
The Baths Hall



Jason Donovan
12 December
The Baths Hall



Christmas Carol Concert
18 December
The Baths Hall



Lee Memphis King: One Night of Elvis
6 January
The Baths Hall



Miles Jupp
28 January
The Plowright Theatre



The Blues Band
2 February
The Baths Hall

Tickets on sale now

www.scunthorpetheatres.co.uk / 0844 854 2776 (calls cost 7p per min plus your phone company's access charge)
In person at The Baths Hall and The Plowright Theatre Box Offices



Managed by SMG in Partnership
with North Lincolnshire Council

Christmas at Ropery Hall this year is a feast of all things festive from jazz and folk to theatre including two versions of A Christmas Carol.

The Alan Barnes Octet promises to deliver the right notes in readiness for December 25 with their Christmas Carol which guarantees, just like the Dickens' classic itself, a family night out that is, as well as being a treat for the jazz connoisseur, a delight for anyone who loves music or literature – or just Christmas!

A day later St Agnes' Fountain returns to the venue as part of their Christmas tour. This is the 16th year St Agnes' Fountain comes together at this time of year and they hope to bring you more of their sparkling musicianship, humour and heartfelt renditions of your favourite Christmas tunes both original and those you know so well (or thought you did). Christmas, as they say, starts with St Agnes' Fountain.

European Arts Theatre Company will be performing its own version of A Christmas Carol on December 17 in a faithful recreation of Dickens' famous performance of his best-loved and most heart-warming story. £1 from each ticket sold will go to the children's charity Barnardo's so come and enjoy a seasonal treat in the spirit of Christmas past, present and future.

The following day a Ropery Hall favourite for children's theatre, Blunderbus Theatre, will be giving two performances, at 11am and 2pm, of Santa's Little Helper, a delightful new show with an irresistible blend of music, puppetry and high energy storytelling - the perfect treat for Christmas. Aimed at little people aged between three and seven years there is also the chance to meet Santa himself.

Full details, including how to book tickets can be found on www.roperyhall.co.uk

BARTONIAN ADVERTISING RATES

Full page (185mm x 265mm)
£120 black & white £150 colour;
Half page (185mm x 130mm)
£60 black & white £80 colour;
1/3 page (185mm x 90mm)
£40 black & white £50 colour;
¼ page (90mm x 130mm)
£30 black & white £40 colour;
1/8 page (90mm x 65mm)
£20 black & white £30 colour;

Sizes in between quoted on request.

If you would like to advertise in the newsletter, please send an email to bartontownclerk@btconnect.com

Any advertising queries please
contact the town council
office on 01652 633598



Keith Ready & Co
Solicitors

With **BG Solicitors LLP** 

We offer **FREE** home visits for our Wills, Probate and Older Client Services and competitive prices for our Conveyancing Services.

Contact: Keith Ready for a NO obligation quote.

We also offer:
Fixed Fee Divorces
Family Matters/Care
Personal Injury
General Litigation
Debt/Housing
Landlord/Tenant Disputes
Employment Law
Commercial Property

3-4 Market Place, Barton upon Humber, DN18 5DD.
01652 632215 mail: info@bgsolicitors.com www.bgsolicitors.com

Your local Solicitors working
in partnership with the
local community

LOWE PLUMBING & HEATING LTD

GAS, OIL & SOLID FUEL



8330

GAS SAFE REGISTERED

FREE ESTIMATES**ALL WORK
GUARANTEED****FRIENDLY
PROFESSIONAL
SERVICE****FAMILY RUN
BUSINESS**9 PLUMLEAF WAY
BARTON UPON HUMBER
DN18 5GT**BOILER SERVICE REPAIR & INSTALLATION****CENTRAL HEATING SYSTEMS - SHOWERS****NEW BOILER - 10 YEAR GUARANTEE from £18 per Month****POWER FLUSHING & DESCALING - MULTI FUEL HEATING****GAS FIRES & SURROUNDS SUPPLIED & INSTALLED****ALL PLUMBING REPAIRS & MAINTENANCE****TELEPHONE: 01652 633 161****MOBILE: 07703 519978 & 07703 519979****EMAIL: loweplumbingandheating@yahoo.co.uk**www.loweplumbingandheating.com

BARTON CIVIC SOCIETY

A good deal has happened since the last issue of the Bartonian. In June, our newsletter was published and copies delivered to members. On 15 July, we held our AGM at which the chairman introduced a slightly revised constitution for the Society. It was a great pleasure on this occasion to present our annual award to Qudos Homes for their tasteful conversion of the Bluebell premises into houses and flats. In the second part of the meeting, some worthwhile and interesting talks were given by Neil Turner on the activities of CHAMP, by Liz Bennett on the work of the Ropewalk, and Paul Thornton on the impressive restoration of Joseph Wright Hall (formerly the Salvation Army Citadel). This last is now owned by the Queen Street School Preservation Trust, which is in the process of converting it into a community performance space and lecture hall.

The Society also contributed significantly to the events of Lincolnshire Heritage Open Days ('Behind Closed Doors') featuring in particular a viewing of Joseph Wright Hall and a visit to the Beck, which project is now nearing completion, the whole area having been landscaped and seeded with grass and wild flowers, while the pointing of the churchyard wall is proceeding

apace. This project, which has taken much planning and hard work on the part of those responsible, is the most ambitious one ever to be undertaken by the Society and has made an enormous improvement to this area of the town.

Other events have included a most enjoyable and successful trip to Sewerby Hall and Gardens and a talk on the life and work of the famous Hull-born architect Cuthbert Brodrick by John Scotney, delivered appropriately in Joseph Wright Hall, since the man after whom the Hall has been named was one of Brodrick's pupils.

Our programme of public meetings for this calendar year concludes with a talk entitled 'Assembly Rooms to Sabre-Toothed Tiger: History in Reverse' on 18 November to be given by Richard Clarke. These meetings take place in the Assembly Rooms at 7.30 and admission is free to members. The charge for non-members is £2.00. If you would like to join the Society, please contact Richard Clarke at 1, Sluice Road, South Ferriby DN18 GJG (tel. 01652 635876).

For further information, you may consult our website, www.bartoncivicsociety.co.uk.

Two marketing experts are to combine forces to project Barton's attractions to the outside world.

Joanne Marwood and Jamie Smith, both Barton residents, are to deliver the marketing element of the heritage project Past Forward which has received 12 months funding from Arts Council England. The two, who took up their part-time roles in October, will be looking to promote the cultural and heritage offer and the town's shopping community in various ways.

As part of the project a revised Shrink Map will be launched as will a mobile app, Hidden History, that will take users on a walk around the town and at various locations they will be able to access the history of the buildings in front of them.

Jamie will be concentrating on promoting Barton as a town full of history while Joanne will be looking to expanding the shopping offer, including producing Barton focussed merchandise as well as training volunteers to enable the project to continue after funding has ended.

In late winter the final part of the Past Forward project will be the appointment of a Wikipedian in residence for six months to develop Barton's on-line presence.

The project will be managed by The Ropewalk and Wilderspin National School with support from Barton Tourism Partnership.

Barton Town Council

would like to take this opportunity to thank everyone who took part in the research undertaken by the town council's former Strategic Plan Working Party earlier this year. All the information gathered has been forwarded to the North Lincolnshire Council 'Barton Regeneration 2018' group for their consideration when looking at their Regeneration programme for Barton over the next couple of years.

Best Kept Garden & Hanging Basket Winners in 2016

Best Kept Large Garden - Susan & Maurice Newmarch, Tyson Close, Barton

Best Kept Cottage Garden - Mr & Mrs Lincoln, Bramley Close, Barton

Best Kept Hanging Basket - Mr & Mrs Lincoln, Bramley Close, Barton

Best Kept Business Hanging Basket - The George Inn, George St

At the presentation evening winners received a trophy, certificate and gift voucher from the Mayor of Barton, Councillor Alan Todd and Richard Clarke Chairman of Barton Civic Society.

Each year the Civic Society contributes towards the cost of the prize money.

The runners up were:

Best Kept Large Garden Private House— Mr & Mrs N Welch, Hillside Drive 2nd Place, Wendy Altoft, Meadow Drive, 3rd Place

Best Kept Cottage Garden Private House —Mr & Mrs Humpleby, Bayleaf Lane 2nd Place, Anne Robinson, Beretun Green 3rd Place

Hanging Basket, Private House — Mr & Mrs N Welch, Hillside Drive 2nd Place, Mr & Mrs Humpleby, Bayleaf Lane 3rd Place.

Hanging Basket, Business Premises — The White Swan, Fleetgate 2nd Place, The Wheatsheaf, Holydyke 3rd Place.



Each of the runners-up received a certificate and prize money.

All entrants received a Certificate of Merit in recognition of the hard work undertaken.

The judges were Councillor Frank Coulsey, Barton Neighbourhood Services Team, Barton Civic Society & Barton Lions Club representatives.



Smith and Walker (Optometrists) Ltd

Barton	Immingham	Winterton
01652 632315	01469 572702	01724 733754

On-line booking is now available through
our website

www.smithwalker.co.uk

Now on our website: **InformationVideos**

The dispensing optician: We use qualified dispensing opticians to advise on the most suitable lenses and frames. As well as being of general interest this is an informative video for anyone considering a career in optics.

New – ZEISS DriveSafe Lenses.

One pair of glasses for everyday use and safer driving.

Many people feel insecure, uncomfortable and stressed when driving, especially in difficult light and weather conditions such as rain and mist, or at dusk or night. Driving can be a real challenge for everybody – no matter how long the distance, and good vision is vital for safety.

With ZEISS DriveSafe Lenses, ZEISS is introducing a new lens product category for everyday use. It is specifically designed to meet the vision needs of people who want to feel safer and more comfortable when driving with their everyday lenses.

ZEISS DriveSafe Lenses are available in both single vision and progressive lens types

- Better vision in low-light conditions for safer and more comfortable driving
- Reduced glare at night from oncoming cars or street lights

RNS

Chartered Accountants

Struggling with your tax return?

Consult the experts on High Street.



Contact Us:

Barton - 01652 655111

41 High Street, Barton-Upon-Humber,
North Lincolnshire, DN18 5PD

Offices also at:

Scunthorpe - 01724 842713

50 - 54 Oswald Road, Scunthorpe,
North Lincolnshire, DN15 7PQ

Brigg - 01652 655111

The Poplars, Bridge Street, Brigg,
North Lincolnshire, DN20 8NQ

CENTRAL SURGERY

PATIENT PARTICIPATION GROUP

Central Surgery's patient participation group consists of ten patients who meet bi-monthly to discuss issues and events going on within the practice. They are in place to act as an advocate for patients and to ask those all important questions that need asking!

If you would like to make contact with the patient forum please write to Ursula Vickerton (Chairperson) C/O Central Surgery. Ursula will then raise any matters on your behalf. Speaking on behalf of the forum; "We look forward to hearing from you!"

BARTON LADIES' LUNCHEON CLUB

The Club was founded in 1986 by a few retired teachers meeting each month in one of their front rooms and from those humble beginnings the Barton Ladies' Luncheon Club was born and has flourished over the last 30 years.

We meet every second Wednesday of the month at the Barrow Haven Inn where we enjoy lunch and a variety of speakers who entertain us with a wide range of subjects.

In August of each year, we have a coach trip out and visit an historic house and gardens or some other place of interest. This year we visited Thompson's (the Mouseman) Factory and Museum in Kilburn, North Yorkshire where we were able to see some of his many pieces of beautiful oak furniture and smaller gift items, all with the trademark mouse carved in the wood. Afterwards, we enjoyed lunch at the Forresters' Arms Pub, before finishing off the day with a visit to Scampton Gardens near Malton and enjoyed the wonderful layout of the walled gardens before returning home.

Anyone wishing to join us at the Barrow Haven Inn will be very welcome and I am sure will enjoy not only the lunch and speaker each month, but also the companionship of the members.

For more information, please contact Mrs G. H adden on 01652 637083



Celebrating Older People

'Full of Life!'

**Lots of
activities and groups
are going on in
your area**



- Coffee and social groups
- Bowling (indoor and outdoor)
 - New Age Kurling
 - Wood Turning
 - Cycling Groups
 - Walking groups
 - Swimming
- Volunteering Opportunities
- And much more



**Contact the local
Community Well-being Hub
for more information on what is
available in and around Barton**

01652-634554



Barton-on-Humber Women's Institute

Has been established more that 30 years,
they meet on the 3rd Monday of every month.
We meet at

2pm in St Mary's Church Hall

and enjoy speakers on a wide variety of subjects,
outings, meals out and good company.

New members are always very welcome.

Please telephone our
President Mrs Auriol Trubshaw
on 01652-633302
for more details,
or just come along to any meeting.

All articles intended for inclusion in the Bartonian must be checked for accuracy eg dates etc before submission to the Editor. No responsibility will be taken for inaccurate information published. All articles must include a contact name and address.

Advertisers' views are their views only and not necessarily the views of the Town Council.

Comments and services offered may not always be endorsed by the Council.

No information to be reproduced from the Bartonian, without prior consent from the town council

HOUSEHOLD EMERGENCY PLAN information & BARTON'S COMMUNITY EMERGENCY PLAN document are both available in the Town Council Section of the Barton Tourism website at www.barton-upon-humber.org.uk/bartontowncouncil

The Barton Carnival

returned for its second year and fulfilled its promise of hosting a bigger and better event!

This year the carnival was opened with the return of the long awaited 'Barton Carnival Parade' which started at Tesco Barton and paraded through the town. The parade featured many of Barton's local groups and clubs led by Rushby Dance and Fitness then followed by the Army Cadets, Barton United Junior Football Club along with several dance groups and the local primary schools. They all managed to put on a smile despite the miserable weather!



Stannage Stunt show opened the entertainment line up in the main arena thrilling the audience with fantastic displays and stunts. A full programme of entertainment followed including Heatwave entertainment, Vander Wheel of Death, Tug of War between Divergence Fitness and Warriors Gym as well as various dance displays. Meanwhile the smaller arena hosted a fantastic dog show and the marquee hosted several displays of dance, theatre and poetry, a fashion show by ICE 3 as well as the comeback of the Barton Bake Off hosted by Momma's Little Bakehouse.



The entertainment was topped off with the usual fairground attractions, over 40 stalls promoting local businesses, a petting farm and birds of prey and the much talked about evening entertainment featuring the fantastic Shine UK and Ultra 90s who wowed the audience!

We were once again granted a visit from the Red Arrows and the sun shone all day on the Sunday which was pleasing to see. With surprise visits from

Bumblebee and other famous characters courtesy of

CPM entertainment and iota visual arts 'little giants' meaning there was something for everybody.



If you would like to volunteer to help, whether it be organising the event or 'extra hands' on the day, with either the Carnival or Parade, please contact Ben Troop on 07894855449 or message the committee through the facebook page, email bartoncarnival@hotmail.com

Barton And District History Group

The Barton and District History Group continue to produce excellent talks, which attract many people who take an interest in local history. The last talk, entitled, "*Roman Landscape of the Humber Foreshore*", was presented by Chris Casswell, on the 23rd June. This attracted many people, and was a very interesting production. On 23rd September Brian Peeps, the very well known local Historian, presented a slide show, entitled "*Down Your Way*"; showing photographs from the 1930/40/50s, comments, on which, were made by the Chairperson, Linda Brown. The second half of the show consisted of photographs of shops that were in the town.

Our final presentation for this year took place on 27th October, entitled; "*Further excavations at Thornton Abbey*"; presented by Hugh Wilmott.

Events take place at our usual venue; St. John Headquarters, Fleetgate, Barton upon Humber, at 7.30pm.

Arrangements are well under way for next year's talks, and will be announced in the next Bartonian. Progress is being made on the production of the "*Heritage*", a journal to be published in the near future. Thanks to Peter Croton for taking on this task.

It is hoped that people will make the effort to attend our AGM in November, at a date which will be publicised. We are in need of two more committee members, so please attend and offer your suggestions, or services.

Details of joining the group can be obtained from our chair person: hbrown125@btinternet.com. Why not visit our page which has been created as a 'trial' on Facebook

BARTON WARD



Councillor Keith Vickers
01652 633951



Councillor Paul Vickers
01652-781629



Councillor Jon Evison
07976276895

Serving you on North Lincolnshire Council

If you have a council related problem, then telephone us on any of the above numbers or call into our **Surgery on the 3rd Friday of the month at Tesco, Barton** 10am – 11.30am

The above councillors will make home visits to constituents – please telephone them on the above numbers to arrange an appointment.

Tyers Accountancy

Tax, accountancy and business support

Friendly local service with home visits available

- ✓ FREE initial consultation plus FREE bookkeeping software
- ✓ New business start-ups and advice
- ✓ Accounts, bookkeeping and payroll
- ✓ Limited companies
- ✓ VAT, income tax and Self Assessment
- ✓ Tax enquiry cover plus FREE legal and business helpline



Cally Lodge, Marsh Lane
New Holland, DN19 7PY
Tel: 01469 533203

Email: enquiries@tyers-accountancy.co.uk
Web: www.tyers-accountancy.co.uk

USEFUL CONTACT NUMBERS IN THE BARTON-UPON-HUMBER AREA

Central Surgery	01652 636600	West Town Surgery (Dr. Muralee)	01652 660041
Barton Police Station	101	Local Link Office	01724 296800
Barton Town Council	01652 633598	Baysgarth Leisure Centre	01652 632511

Visitor Centres

Far Ings Nature Reserve	01652 637055	Waters Edge Visitors Centre	01652 631500
Baysgarth Museum	01652 637568	Wilderspin National School	01652 635172
The Ropewalk	01652 660380		

Transport/Community

Bus Timetable	01482 222222	Train Times	08457 484950
		Planning	01724 297420
Environmental Health	01724 297827	North Lincolnshire Homes	01724 279900



Barton Rotary Club

Christmas Festival

The annual **Photos with Santa** event, part of the Barton Christmas Festival, will be held in the Barton Methodist Chapel Lecture Hall on November 26th from 2.00pm to 4.30pm. Children will also receive a present from Santa and the cost is only £4.00.

Trinity Church members will also be serving refreshments, offering a Soft Toys Tombola and Face Painting.



Trinity Christmas Tree Festival

Trinity Methodist Church and Barton Rotary Club are again staging a Christmas Tree Festival in the Chapel, during the Barton Festival. Local businesses and organisations have been invited to display a tree, decorated to depict what they do. Free admission to view the trees on Saturday Nov. 26th from 2.00pm until 5pm.

A free **Christmas Concert for Senior Citizens** will be staged at Trinity Methodist Church on Sunday December 18th at 4.00pm, featuring The Positive Notes Choir providing seasonal entertainment plus festive music to "sing-along" to. Barton Rotary Club members will be serving refreshments at around 5.00. Please phone David Witter on 632675 to arrange transport for you to the hall.

The now traditional way for Barton Rotarians to spend Christmas Day morning, is to cook and deliver around 50 **Christmas Lunches** to elderly people who are on their own. This is a full Christmas Dinner, including turkey with all the trimmings, a trifle, mince pie and fruit. To arrange this, please phone David Witter on 632675 and a member will call round to make the delivery arrangements.

Rotarians are ordinary men and women from all walks of life who have a desire to give something back to their community, whether it is locally or at an international level. If you would like to help us please make contact through our web site or any of our Barton members - we will be pleased to hear from you.

Stamp Collection

When you receive your Christmas Cards, please save your used stamps.

Barton Rotary Club is collecting British and Foreign postage stamps on behalf of the Royal National Institute for the Blind.

Please cut off the stamp, leaving some paper around it and collect them in an envelope, putting them through the letter box at Harrison's Restaurant in Barton Market Place.

New Place to Rest

A seat, situated in King Street, has been dedicated to the memory of Ken Osgerby. Ken, who died in 2009, helped many people in the town and was a founder member of Barton Rotary Club. The seat is the only one in this main shopping street and the Rotary Club instigated the request for its provision - a much needed place to rest.



Ken's grand daughter, Claire Curtis, unveils the plaque, watched by Rotary President Margaret Parrott, Rotarians, Town Councillors and Ken's sons.



Santa will be touring the streets of Barton between 7th and 13th December, assisted by members of Barton Rotary Club. Many children are brought out to see Santa during this very popular event. Santa will also be helping members with their collections outside The Co-op and Tesco on 10th and 11th of December. Part of these collections helps to pay for some of the events for the elderly at Christmas.



Barton Rotary Club - doing great things in Barton and the surrounding villages since 1977

THE HISTORIC ASSEMBLY ROOMS

Queen St, Barton, DN18 5QP



AVAILABLE FOR HIRE

As well as being a venue for the performing arts this community hall, in the centre of town, is an ideal setting for your event.

The large main hall with balcony, sprung dance floor, public address system and licensed bar can accommodate up to 150 people.

Ideal for:

- Special occasions
- Parties, receptions & social functions
- Regular classes
- Activities & meetings
- Corporate bookings

The ground floor meeting room is well spaced for smaller groups.

Kitchen facilities also available

Enquiries and viewings welcome on:

Tel: 01652 637568 Email: info@champltd.org

www.champltd.org and Facebook

Coming Up

- 11 Nov Murder by Gaslight
- 20 Nov The Canterville Ghost
- 25 Nov Dare Devil Rides to Jarama
- 1-2 Dec Barton Musical Theatre Company
(Juniors) Xmas Show
- 3 Dec The Silver Circle Band
- 17 Dec The Del-Vikings
- 22 Jan Megaslamm Wrestling (family event)

See inside this issue for more details

CHAMP, a local charity manages four buildings in Barton: Assembly Rooms, Baysgarth House Museum, the Hub (previously the Youth Centre) and 51 Fleetgate (currently pending architectural conservation work).



Community Heritage Arts
& Media Project

Charity No. 1114978
Company No. 05618938

BARTON TOWN COUNCIL MEETINGS

Full Council Meetings at 7.00pm
in Baysgarth House
(1st Wednesday of each month)

7 December
4 & 23 (extra-ordinary- Budget) January
1 February
1 March
5 April

Planning Committee at 7.00pm
in The Assembly Rooms
(every three weeks on Mondays)

5 & 19 December
9 & 30 January
20 February
13 March
3 & 24 April

Finance & General Purposes Committee

16 January (Budget)
10 April

Environmental Committee

21 November & 13 February

Community Committee

12 December & 20 March

Committee meetings at 7.00pm in The Assembly Rooms on Mondays

Barton Town Council Members

If you think that they can help you with anything then please contact one of your Town Councillors:

Bridge Ward

Mrs A C Clark [I]	10 Western Drive	Tel. 01652-634152
C H F Coulsey [C]	28 Pitman Ave	Tel. 01652-632999
Cllr A Lamyman [C]	23 Oak Drive	Tel: 07563-250190
Mrs J D M Mason [C]	3 Barrow Road	Tel: 01652-632949
L J D Oxley [I]	17 Warrendale	Tel. 01652-781588
Mrs J E Oxley [I]	17 Warrendale	Tel. 01652-781588
C Ulliott [C]	25 Clipson Crest	Tel: 07703-136684
K Vickers [C]	Horkstow Road	Tel. 01652-633951
Ms J L Warton [C]	18 Market Place	Tel: 01652-632084
I Welch	13 Summerdale	Tel: 07956-025403
D Yellowley	5 Prince Charles Drive	Tel: 07818-057195

Park Ward

J Evison [C]	11 Beck Hill	Tel. 07976-276895
Mrs S Evison [C]	11 Beck Hill	Tel: 07976-276908
N Jacques [G]	15 Queen Street	Tel: 01652-632438
Mrs D Pearson [I]	16 Barrow Road	Tel 01652-632249
N Pinchbeck	10 Lower Meadows	Tel: 01652-633811
J Sanderson	9 Barrow Road	Tel: 07966-582979
P Thornton [G]	1 Bayleaf Lane	Tel: 01652-634142
Mrs C Thornton [G]	1 Bayleaf Lane	Tel: 01652-634142
A Todd	8 Orchard Close	Tel. 01652-634539
J P Vickers [C]	16 Plumleaf Way	Tel. 01652-781629
Mrs W Witter [I]	6 The Bridges	Tel 01652-632675

C = Conservative. G = Green. I = Independent. L = Labour.

Members serving on North Lincolnshire Council
Cllrs J Evison, JP Vickers, K Vickers.

You can also write to the Town Clerk at:

**Council Office, Assembly Rooms, Queen Street,
Barton-upon-Humber. DN18 5QP.**

Tel. 01652 633598

email bartontownclerk@btconnect.com

www.barton-upon-humber.org.uk/bartontowncouncil

Letters, Articles, Comments, Praise, Blame, Adverts, all these—and anything **YOU** want to see or hear about in the next issue of the Bartonian should be sent (by the 1st March 2017) to: The Council Office, Assembly Rooms, Queen Street, Barton-upon-Humber, DN18 5QP. Tel: 01652 633598 email bartontownclerk@btconnect.com www.barton-upon-humber.org.uk **IT'S YOUR NEWSLETTER, WHAT DO YOU WANT TO SEE IN IT?**